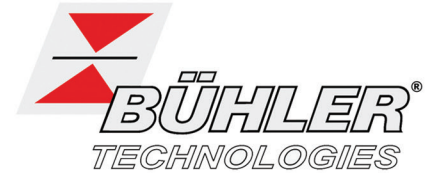




OFFICIAL UK DISTRIBUTORS FOR:



DRM Technic

Suppliers of Gas Analysis Equipment

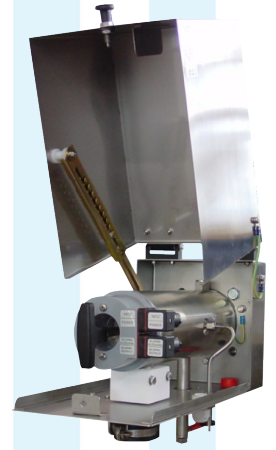
**GAS 222.21 ATEX 2
Sample Gas Probe**

GAS 222.21 ATEX 2 SAMPLE GAS PROBE

In gas analysis, the sample point is a critical interface between the process and the analysis system. The GAS 222 series of probes have a robust modular design, come assembled-to-order, are easy to install and have low operational costs.

FEATURES

**Heated Sample Gas Probe with Shut-Off Valve | In-Situ and/or Downstream Filter
Easy Tool-less Element Replacement | Effective Insulation and Protection Shield
Self-Regulating at up to 120 °C (T3) / 70 °C (T4) with Low Temperature Alarm
For Dust Concentrations of up to 2 g/m³ | Specified for Use in Hazardous Areas**



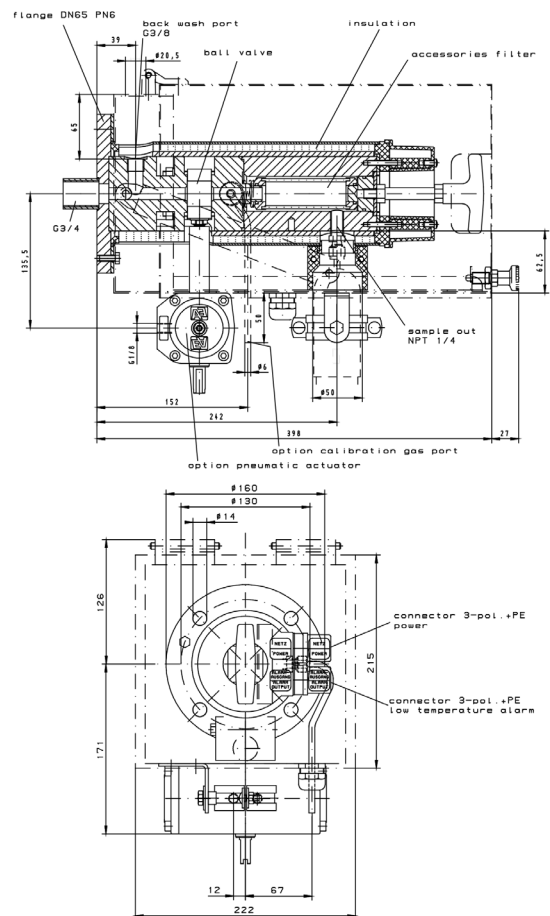
SPECIFICATIONS

Product No.	GAS 222.21 ATEX 2
Material	1.4571 SS ball valve: 1.4408 SS
Seals	Graphite, 1.4404 SS + filter elements
Max. Working Pressure	6 bar
Temperature	Self-regulating; 130 °C (T3) / 70 °C (T4)
Low Temperature Alarm	Contact is open at operating temp.; closes at < 95 °C (T3) resp. < 45 °C (T4); U _{max} =30VDC, I _{max} = 100mA, CI/Li~0
Ambient Temperature	- 20 to 80 °C
Pressure Shut-Off Valve	6 to 8 bar
Suitable for	II 3G EEx nA L IIC T3; 3G c II C T3; II 3G EEx nA L IIC T4; 3G c IIC T4

OPTIONS AND ACCESSORIES

Please see the "GAS 222 ACCESSORIES" datasheet for our full range of accessories

TECHNICAL DRAWINGS



CONTACT US: DRM Technic, 15C Raleigh Hall Industrial Estate, Stafford, Staffordshire, ST21 6JL