

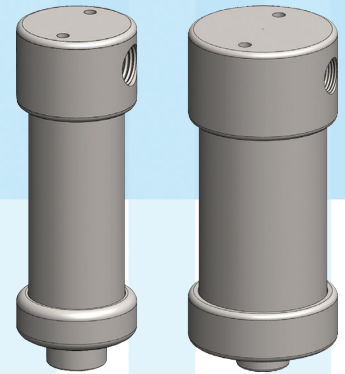


OFFICIAL UK DISTRIBUTORS FOR:



DRM Technic

Suppliers of Gas Analysis Equipment



FHx-SS STAINLESS STEEL FILTER HOUSINGS

FHx-SS series filter housings are specified for high pressure 1/4" line applications where a fast response time is critical.

FEATURES

Materials: 316L Stainless Steel | Ports: 1/4" NPT (F) | Pressure: 10 Bar | Elements: See Specifications

SPECIFICATIONS

| Product No. | FH1-SS | FH2-SS | FH3-SS |
|--------------------------------------|--------------|--------------|--------------|
| General | | | |
| Port Size | 1/4" NPT (F) | 1/4" NPT (F) | 1/4" NPT (F) |
| Drain | 1/4" NPT (F) | 1/4" NPT (F) | 1/4" NPT (F) |
| Max. Pressure | 10 Bar | 10 Bar | 10 Bar |
| Max. Temperature | 200 °C | 200 °C | 200 °C |
| Materials of Construction | | | |
| Head and Internals | 316L SS | 316L SS | 316L SS |
| Bowl | 316L SS | 316L SS | 316L SS |
| Seals | Viton | Viton | Viton |
| Suitable Elements | | | |
| Coalescing Filter Element | FH1-CFE | FH2-CFE | FH3-CFE |
| Particulate Filter Element | FH1-PFE | FH2-PFE | FH3-PFE |
| Adsorber Cartridge Code ¹ | FH1-ADEx | FH2-ADEx | FH3-ATEx |
| Principal Dimensions | | | |
| Diameter | 40 mm | 56 mm | 56 mm |
| Height | 118.5 mm | 132.5 mm | 245 mm |
| Volume | 45 cc | 70 cc | 250 cc |
| Weight | 0.4 kg | 1.2 kg | 1.3 kg |

ACCESSORIES

| | | | |
|------------------|--------|-----------|--------|
| Mounting Bracket | SMB | LMB | LMB |
| Support Core | FH1-SC | FH2-SC | FH3-SC |
| Fittings Kit | LFK | LFK | LFK |
| Catchpot Housing | -- | FH2-SS-CP | -- |
| Bubbler Housing | -- | FH2-SS-BB | -- |

CONTACT US: DRM Technic, 4 Cherry Orchard, Newcastle-under-Lyme, Staffordshire, UK, ST5 2UB

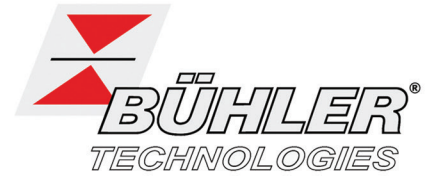
Tel: +44 (0) 1782 638491 | Email: sales@drmtechnic.com | Web: www.drmtechnic.com

DRM/FHxSS/
121115/002

DRM/FHxSS/
121115/002



OFFICIAL UK DISTRIBUTORS FOR:



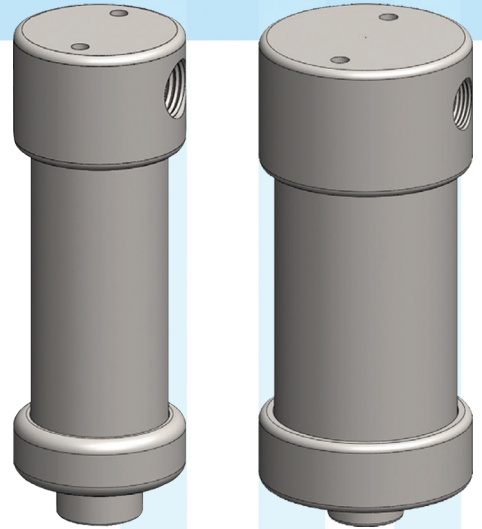
DRM Technic

Suppliers of Gas Analysis Equipment

FHx-SS STAINLESS STEEL FILTER HOUSINGS

PARTS LIST ¹

| | |
|------------------|----------|
| Housing | FHx-SS |
| Filter Element | FHx-xFE |
| Adsorber Element | FHx-ADEx |
| Mounting Bracket | xMB |
| Support Core | FHx-SC |
| Fittings Kit | LFK |



FILTER GRADES

The efficiency depends on the flow rate and pressure but for analytical applications with typically low flows, you can consider:

| Grade 5 | Grade 6 | Grade 7 | Grade 8 |
|------------|------------|-------------|--------------|
| 0.1 Micron | 1.0 Micron | 10.0 Micron | +50.0 Micron |
| 0.2 Micron | 2.0 Micron | 20.0 Micron | |
| | 5.0 Micron | | |

ADSORBER GRADES

| Grade | Adsorber | Principal Uses |
|-------|---------------------------|---|
| 1 | Activated Carbon Granules | Removal of hydrocarbons and other organic vapours |
| 2 | Activated Carbon Cloth | Removal of hydrocarbons and other organic vapours |
| 3 | Molecular Sieve 4A | Removal of CO ₂ , NH ₃ , H ₂ S, and SO _x |
| 4 | Molecular Sieve 13X | Removal of CO ₂ , NH ₃ , H ₂ S, SO _x , aromatics and amines |
| 5 | Silica Gel (Blue) | Removal of water vapour |
| 5a | Silica Gel (Orange) | Removal of water vapour |
| 6 | Mixed Bases (Soda Lime) | Removal of acidic gases, CO ₂ , SO _x , NO _x and HCl |
| 7 | Potassium Permanganate | Removal of SO _x and other acidic gases |
| 8 | Hopcalite | Removal of CO by catalytic conversions to CO ₂ |

FOOTNOTES: ¹ Replace "x" with the grade of adsorber required; ie. FH1-ATE3. For more details on the grades available, see the adsorber grade box above.

CONTACT US: DRM Technic, 4 Cherry Orchard, Newcastle-under-Lyme, Staffordshire, UK, ST5 2UB

Tel: +44 (0) 1782 638491 | Email: sales@drmtechnic.com | Web: www.drmtechnic.com

DRM/FHxSS/
121115/002

DRM/FHxSG/
121115/002