



OFFICIAL UK DISTRIBUTORS FOR:



DRM Technic

Suppliers of Gas Analysis Equipment



GAS 222.20 ATEX SAMPLE GAS PROBE

In gas analysis, the sample point is a critical interface between the process and the analysis system. The GAS 222 series of probes have a robust modular design, come assembled-to-order, are easy to install and have low operational costs.

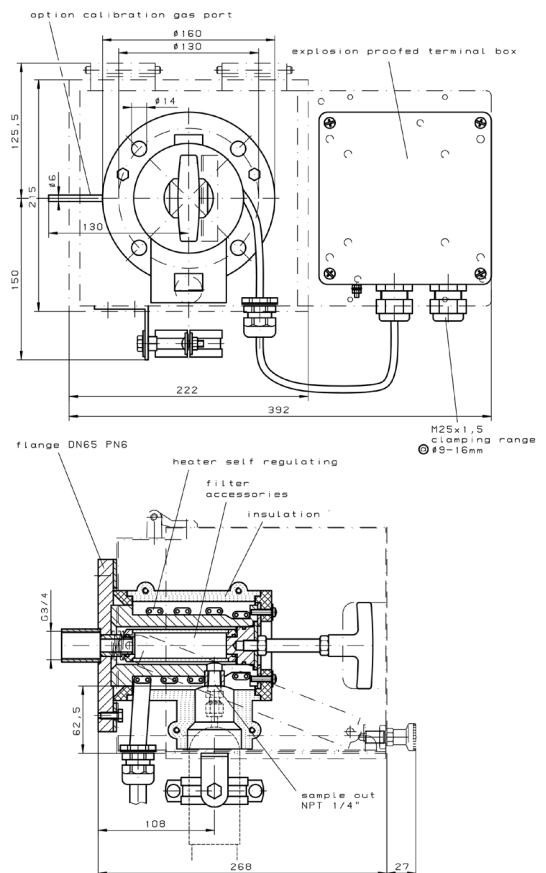
FEATURES

Heated sample gas probe with downstream filter, weather protection shield and junction box
Easy filter element replacement | Effective insulation and protection shield | C-US and CSA Approval
For dust concentrations of up to 2 g/m³ | Self-regulating at up to 130 °C (T3) / 70 °C (T4)

SPECIFICATIONS

Product No.	GAS 222.20 ATEX
Material	1.4571 SS
Seals	Graphite, 1.4404 SS + filter elements
Max. Working Pressure	6 bar
Max. Flow Rate	1000 l/h
Max. Inlet Temp. Process Media	135 °C
Voltage	230 V, 50/60 Hz; or 115 V, 50/60 Hz
External Circuit Breaker	Type C: 2A for 230 V, 50/60 Hz 3 A for 115 V, 50/60 Hz
Ambient Temperature	-20 to 50 °C
Temperature	Self-regulating; approx. 80 °C
Ex-marking of the basic unit	1 GD / 2 GD T4 T130 °C

TECHNICAL DRAWINGS



OPTIONS AND ACCESSORIES

Please see the "GAS 222 ACCESSORIES" datasheet for our full range of accessories

CONTACT US: DRM Technic, 4 Cherry Orchard, Newcastle-under-Lyme, Staffordshire, UK, ST5 2UB

DRM/G2222A/211215/001 Tel: +44 (0) 1782 638491 | Email: sales@drmtechnic.com | Web: www.drmtechnic.com DRM/G2222A/211215/001