



OFFICIAL UK DISTRIBUTORS FOR:



DRM Technic

Suppliers of Gas Analysis Equipment

**PCS.Smart Portable
Conditioning System**

PCS.Smart PORTABLE SAMPLE GAS CONDITIONING SYSTEM

The PCS.Smart Portable Sample Gas Conditioning System is an entire analysis system contained in one small case; featuring a gas cooler, condensate pumps, gas pump, filter, moisture detector, and flow meter with needle valve.



FEATURES

**TC-Standard OEM Cooling System with 90 kJ/h Nominal Capacity | Direct Successor to the TGAk3
Adjustable Outlet Dew Point and Alarm Thresholds | Many Optional Components and Configurations**

SPECIFICATIONS

Product No.	PCS.Smart
Ambient Temperature	5 ... 50 °C
Gas Output Dew Point	2 ... 20 °C (adjustable)
Flow Rate	Approx. 50 ... 280 l/h
Operating Pressure	Max. 2 bar
Electric Supply	230 / 115 V, 50/60 Hz
IEC Connector, Termination Length	2.5 m
Power Input	Max. 250 VA (without heated line)
Operational Readiness	After approx. 10 min
Dimensions without line (H x W x D)	Approx. 460 x 360 x 260 mm
Weight	Approx. 13.5 kg (standard version)
Parts in Contact with Media	PVDF, Glass, Teflon, Stainless Steel, PTFE, Kalrez, Sintered PTFE
Protection Class	IP 20 D
Standard Components	
Cooler	TC-Standard OEM Sample Gas Cooler
Pumps	CPsingle Peristaltic Pumps
Filters	AGF-FE-4 Panel Filters
Moisture Detector	FF-3-N Moisture Detector
Flow Meter	DK 702 Flow Meter
Heated Line	Smartline Portable Sample Gas Probe

CONTACT US: DRM Technic, 4 Cherry Orchard, Newcastle-under-Lyme, Staffordshire, UK, ST5 2UB

Tel: +44 (0) 1782 638491 | Email: sales@drmtechnic.com | Web: www.drmtechnic.com

DRM/CPsdAT/
030217/001

DRM/CPsdAT/
030217/001



OFFICIAL UK DISTRIBUTORS FOR:

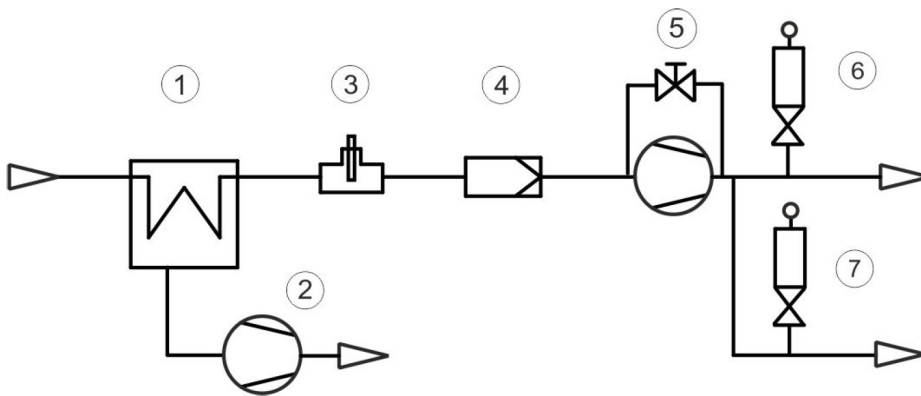


DRM Technic

Suppliers of Gas Analysis Equipment

**PCS.Smart Portable
Conditioning System**

FLOW CHART



1	Cooler
2	Condensate Pump
3	Moisture Detector (Optional.)
4	Filter
5	Sample Gas Pump with Bypass (Opt.)
6	Flow Meter (Opt.)
7	Flow Meter (Opt.)

OPTIONS AND ACCESSORIES

Product No.	Description
CSPX00012	Removal Trolley Case with 50mm casters; aluminium
44920035012	Norprene replacement hose with angled connections for peristaltic pump 0.3 l/h
44920035013	Norprene replacement hose with one straight and one angled connection for peristaltic pump 0.3 l/h
44920035014	Norprene replacement hose with one angled and one screw connection (metric) for peristaltic pump 0.3 l/h
44920035015	Norprene replacement hose with one angled connection and one screw connection (US) for peristaltic pump 0.3 l/h
41151050	FE-4 spare filter (8 pk)
4228003	Bellow for P1 Pump
9009398	O-Ring for bypass P1 Pump
4228066	Set inlet/outlet valves 70 °C for P1 Pump
4640002	Smartline

For more information, please contact our sales department

CONTACT US: DRM Technic, 4 Cherry Orchard, Newcastle-under-Lyme, Staffordshire, UK, ST5 2UB

Tel: +44 (0) 1782 638491 | Email: sales@drmtechnic.com | Web: www.drmtechnic.com

DRM/CPsdAT/
030217/001

DRM/CPsdAT/
030217/001