

DRM Technic

Suppliers of Gas Analysis Equipment



S-SM SERIES SAFETY FLOWMETERS

The S-SM Safety Flowmeters have sealed protection glass around the metering glass, alongside an outer stainless steel shell with a slight window for flow monitoring, making them suitable for the safe handling of hazardous liquids.

FEATURES

Rugged Protection | Large Range of Applications | High Safety Standard

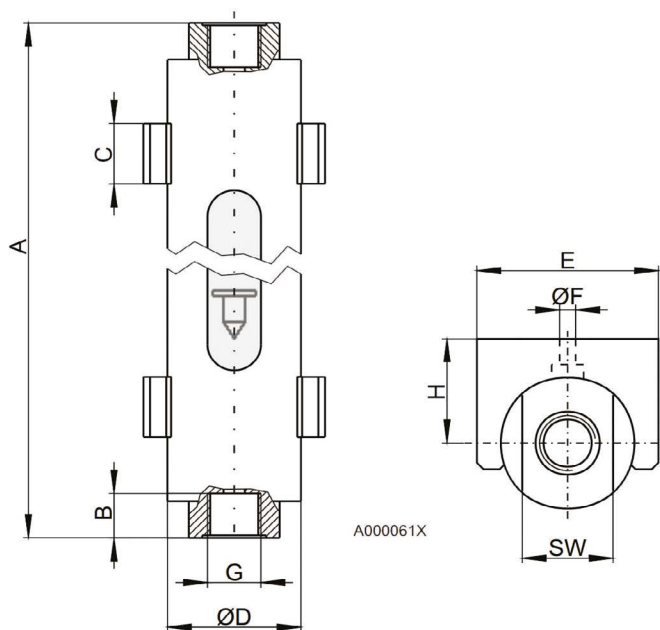
SPECIFICATIONS

Product No.	S-SM xx
Metering Range	See Table of Typical Ranges (overleaf)
Metering Cone	Glass, Hastelloy, SS or PTFE
Endcaps	PTFE, SS or Titanium
Support	Plastic Bracket

OPTIONS AND ACCESSORIES

Product No.	Description
402x999	S-SM 3-1
4024999	S-SM 4
4025999	S-SM 4-1
4026999	S-SM 5

TECHNICAL DRAWINGS



Type	A	B	C	ØD	E	ØF	G	H	SW	kg	Operating pressure* max. at 20°C	Operating temperature* max. at 2bar
S-SM 3-1	197	17	17	25	42	5,5	1/4"NPT	27	22	0,9	10 bar	100 °C
S-SM 4	368	17	23	50	68	6	G 1/2"	40	36	2,8	10 bar	100 °C
S-SM 4-1	368	17	23	50	68	6	G 1/2"	40	36	2,8	10 bar	100 °C
S-SM 5	370	25	23	70	95	6	G 1"	58	46	4	10 bar	100 °C

For more information, please contact our sales department

DRM Technic

Suppliers of Gas Analysis Equipment

TABLE OF TYPICAL RANGES

Flow Meter S-SM 3-1

Media	Air	Water
Pressure	+ 1.2 bar abs.	
Temperature	+ 20 °C	+ 20 °C
Ranges	1.6 - 16 NI/h 4 - 40 NI/h 6 - 60 NI/h 10 - 100 NI/h 25 - 250 NI/h 50 - 500 NI/h 80 - 800 NI/h	0.25 - 2.5 l/h 0.5 - 5 l/h 1.2 - 12 l/h 2.5 - 25 l/h 4 - 40 l/h 6 - 60 l/h 10 - 100 l/h

Flow Meter S-SM 4 / S-SM 4-1

Media	Air	Water
Pressure	+ 1.2 bar abs.	
Temperature	+ 20 °C	+ 20 °C
Ranges	250 - 2500 NI/h 400 - 4000 NI/h 500 - 5000 NI/h 800 - 8000 NI/h	6.3 - 63 l/h 10 - 100 l/h 15 - 160 l/h 25 - 250 l/h 40 - 400 l/h 63 - 630 l/h

Flow Meter S-SM 4 / S-SM 4-1

Media	Air	Water
Pressure	+ 1.2 bar abs.	
Temperature	+ 20 °C	+ 20 °C
Ranges	1000 - 10000 NI/h 1600 - 16000 NI/h 2000 - 20000 NI/h 3000 - 30000 NI/h	25 - 250 l/h 40 - 400 l/h 63 - 630 l/h 100 - 1000 l/h 160 - 1600 l/h 250 - 2500 l/h

For more information, please contact our sales department