



OFFICIAL UK DISTRIBUTORS FOR:

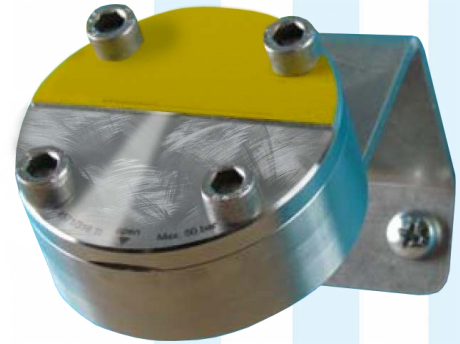


DRM Technic

Suppliers of Gas Analysis Equipment

WTxx.xx RANGE OF WATER-OIL TRAPS

These traps are used to protect the analysers in gas analysis systems, providing an extra level of protection to your equipment in case of a failure elsewhere.



FEATURES

**Easy change of inner membrane | Bypass function |
Certificates: NACE-MR0175-98, ATEX, 31. B |
Gas fitting on rear side of housing**

SPECIFICATIONS

Product No.	WT 20.83 E XL	WT 30.5 E
Delivery	Body compliant with membrane and supporting sieve installation bracket	Body compliant with mebrane and supporting sieve installation bracket
Max. Pressure	2.0 bar (water) 0.3 bar (oil) 220 bar (inside)	2 bar (water) 0.3 bar (oil) 50 bar (inside)
Max. Gas Flow	120 l air/h	30 l air/h
Pressure decrease at 100 l air/h	100 mbar (approx.)	20 mbar (approx.)
Membrane Pore Size	< 0.1 µm	< 0.1 µm
Max. Operating Temp. Range	+ 5 °C/+75 °C (with HD seal/gasket)	- 20° C/190 °C (with FKM Viton O-Rings) - 50° C/190 °C (with PTFE O-Rings)
Effective Filler Surface	25 cm ² (approx.)	10 cm ² (approx.)
Materials	SS 1.4571, FKM (Viton), PTFE with coating	SS 1.4571, FKM (Viton), PTFE with coating
Volume	50 ml	1.5 ml
Dimensions (Casing Box)	100 x 60 mm	80 x 60 mm
Pipe Connectors	1/4" NPT-Internal Screw Thread (input, bypass) 1/8" NPT - Internal Screw Thread (output)	1/6" NPT-Internal screw thread on body's rear side
Installation	Wall montage with bracket	Wall montage with bracket
Certificates	NACE-MR0175-98, Druckgeräterichtlinie, ATEX 94/9/EC-EN 1127-1, 3.1B Materialzeugnis	NACE-MR0175-98, Druckgeräterichtlinie, ATEX 94/9/EC-EN 1127-1, 3.1B Materialzeugnis

For more information, please contact our sales department (contact details below)

CONTACT US: DRM Technic, 4 Cherry Orchard, Newcastle-under-Lyme, Staffordshire, UK, ST5 2UB

Tel: +44 (0) 1782 638491 | Email: sales@drmtechnic.com | Web: www.drmtechnic.com

DRM/ATEX/
251115/001

DRM/ATEX/
251115/001