



OFFICIAL UK DISTRIBUTORS FOR:



# DRM Technic

Suppliers of Gas Analysis Equipment

**EGK 2-19 +  
Sample Gas Cooler**

## EGK 2-19 + SAMPLE GAS COOLER

The EGK 2-19 + Sample Gas Cooler is specified for the maintenance of the sample gas temperature in a gas analysis system.

It contains new generation heat exchangers, giving it particularly low wash out effect (particularly for SO<sub>2</sub>).



### FEATURES

Low Wash-Out Effect | Easy Maintenance | Optimised Heat Exchangers (Duran Glass & PVDF)  
Compact Design; Preinstalled and Ready to Connect

### SPECIFICATIONS

#### Technical Details

Ready for Operation	After max. 15 minutes		
Rated Cooling Capacity (at 25 °C)	320 kJ/h		
Ambient Temperature	5 °C ... 50 °C		
Gas Output Temperature	Preset: 5 °C		
Dew Point Fluctuations	Static: 0.1 K   In the Entire Specification Range: ± 1.5 K		
Temperature Difference between Heat Exchangers	< 0.5 K		
Max. Inlet Temperature	See table "Heat Exchanger Overview"		
Max. Pressure	See table "Heat Exchanger Overview"		
Protection Class	IP20		
Housing	Stainless Steel		
Packaging Dimensions	Approx. 550 x 430 x 340 mm		
Weight (inc. Heat Exchanger)	Approx. 15 kg (standard)   Approx. 18.5 kg (fully expanded)		
Electrical Supply	115 V, 60 Hz or 230 V, 50 Hz; Plug per DIN 43650		
Electrical Data		230 V	115 V
	Typical Power Input	140 VA	155 VA
	Max. Operating Current	1.6 A	3.2 A
Alarm Output Switching Connection	Max. 250 V, 2 A; Phoenix Plug		
Gas Connections	Heat Exchanger: See "Heat Exchanger Overview"   Filter: DN 4/6		
Condensate Outlet	Hose Nipple Ø 5 mm		

CONTACT US: DRM Technic, 4 Cherry Orchard, Newcastle-under-Lyme, Staffordshire, UK, ST5 2UB

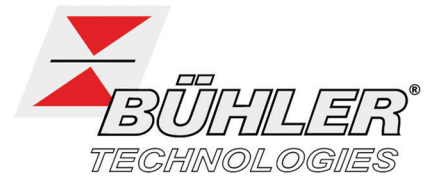
DRM/TCDBI+/301017/001

Tel: +44 (0) 1782 638491 | Email: sales@drmtechnic.com | Web: www.drmtechnic.com

DRM/TCDBI+/301017/001



OFFICIAL UK DISTRIBUTORS FOR:



# DRM Technic

Suppliers of Gas Analysis Equipment

**EGK 2-19 +  
Sample Gas Cooler**

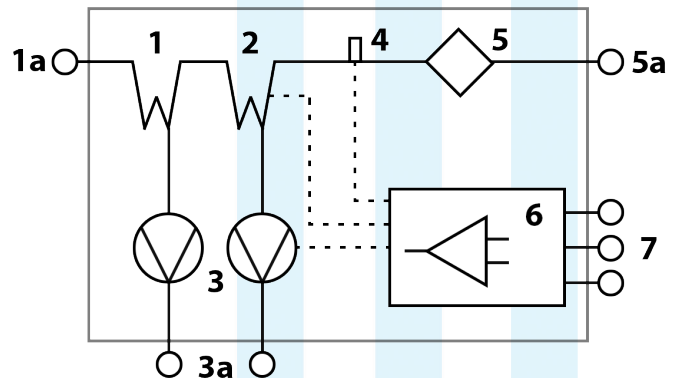
## HEAT EXCHANGER OVERVIEW

Heat Exchanger	2x PTG-2	2x PTV-2
Material	Glass	PVDF
Flow Rate	210 NI/h	190 NI/h
Inlet Dew Point	70 °C	70 °C
Gas Inlet Temp.	140 °C	140 °C
Max. Cooling Capacity	80 kJ/h	65 kJ/h
Gas Pressure	3 bar	2 bar
Pressure Drop	19 mbar	18 mbar
Dead Volume	38 ml	36 ml
Gas Connections	GL14 (6 mm)	DN 4/6
Condensate Out	GL18 (8 mm)	G 1/4

## OPTIONS AND ACCESSORIES

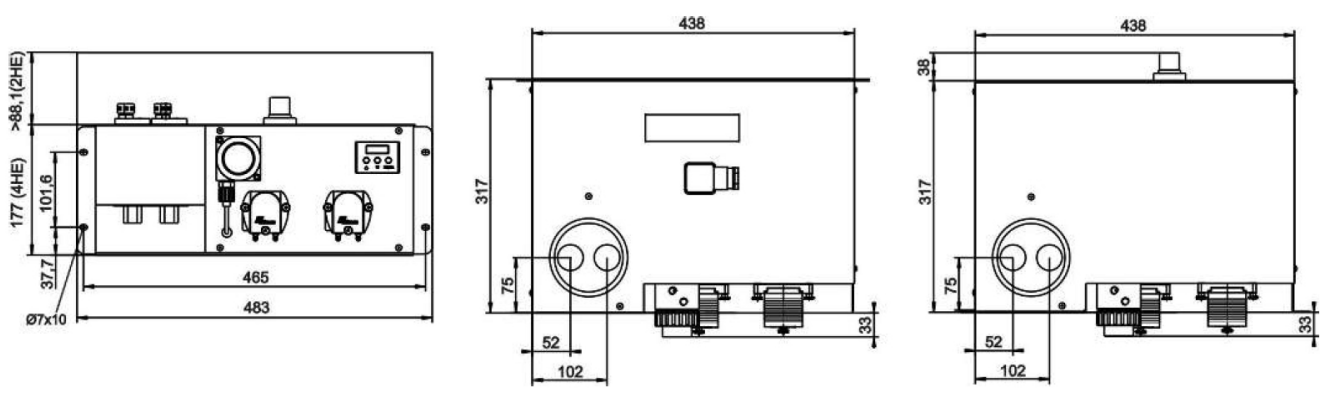
PN	Description
FF-3-N	Moisture Detector
CPsingle	Peristaltic Drain Pump
AGF-FA-5	Filter w/ Filter Housing

## GAS PATH



1a	Heat Exchanger inlet	4	Moisture Detector
1	Heat Exchanger (pre-cooling)	5	Fine Mesh Filter
2	Heat Exchanger (post-cooling)	5a	Filter Outlet
3	Peristaltic Pump	6	Control
3a	Peristaltic Pump Outlet	7	Electrical Connections

## TECHNICAL DRAWINGS



**For more information, please feel free to contact our sales department**

CONTACT US: DRM Technic, 4 Cherry Orchard, Newcastle-under-Lyme, Staffordshire, UK, ST5 2UB

DRM/TCDBi+/301017/001 Tel: +44 (0) 1782 638491 | Email: sales@drmtechnic.com | Web: www.drmtechnic.com DRM/TCDBi+/301017/001