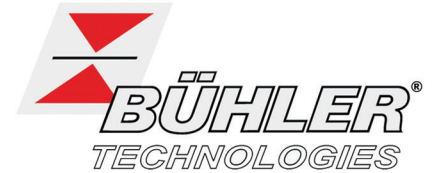
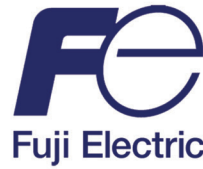




OFFICIAL UK DISTRIBUTORS FOR:

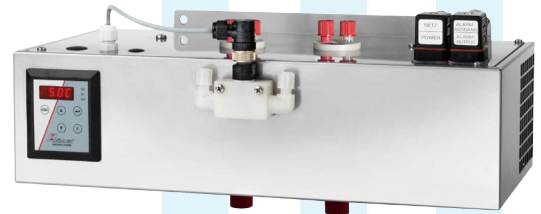


DRM Technic

Suppliers of Gas Analysis Equipment

TC-DOUBLE+ SAMPLE GAS COOLER

Sample Gas Coolers are used to keep the dewpoints of gas sample stable, even under harsh ambient conditions. The TC-Double+ has been designed specifically for high cooling capacities, high ambient temperatures and to cool in two cycles to minimise wash out effects.



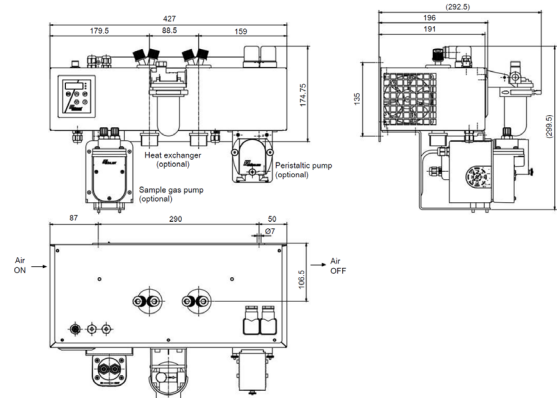
FEATURES

Low Wash Out Effects | One Gas Path | Duran Glass or PVDF Heat Exchanger | Status Display and Output Moisture Detector Connection, Analogue Output, Filter and Peristaltic Pump Optional

SPECIFICATIONS

Product No.	TC-Double+
Ready for Operation	After 10 min (max)
Ambient Temp.	5 °C to 60 °C
Gas Output Temp	5 °C
Protection Class	IP 20
Housing	Stainless Steel, brushed
Dimensions	427 x 300 x 293 mm
Weight	11.5 kg (standard) 15 kg (fully upgraded)
Electrical Power Input	Without add-ons: 230 v AC, 1.6 A; 115 v AC, 3.2 A With add-ons: 230 v AC, 2.1 A; 115 v AC, 4.1 A
Status Output Switching Capacity	Max. 230 V AC, 150 V DC; 2A, 50 VA, potential-free
Electrical Connections	Plug per DIN 43650
Analogue Output	4-20 mA or 2-10 V

TECHNICAL DRAWINGS



OPTIONS AND ACCESSORIES

Product No.	Description
Heat Exchanger Options	
TC-Double 6111	Cooler (Ambient Temp. 40 °C)
TC-Standard 6112	Cooler (Ambient Temp. 60 °C)
Additional Options	
FF-3-N	Moisture Detector
CPsingle/double	Peristaltic Drain Pumps
P1	Sample Gas Pump
AGF-PV-30-F2	Filter

For more information, please contact our sales department (contact details below)

CONTACT US: DRM Technic, 4 Cherry Orchard, Newcastle-under-Lyme, Staffordshire, UK, ST5 2UB

Tel: +44 (0) 1782 638491 | Email: sales@drmtechnic.com | Web: www.drmtechnic.com

DRM/TCDB+/170117/001

DRM/TCDB+/170117/001